



New Products & Services

The following new products and services are offered in the technical exhibit areas. Consult the *Meeting Guide* for the booth number and location of each company.

See the Technical Exhibition
in Halls A, B and D

Online CE Database for Radiologic Technologists



The American Registry of Radiologic Technologists (ARRT®) introduces CEIR.T., a free database

through which anyone may browse CE activities by type (for example, online study, journal reading, self study, and lecture), location and discipline. All CEIR.T. listings have been approved for Category A or Category A+ CE credit by an ARRT-approved Recognized Continuing Education Evaluation Mechanism (RCEEM).

Hand-carried Ultrasound with Color Doppler Option



SonoScape's S6BW HCU hand-carried ultrasound system features black-and-white ultrasound with available color

Doppler option. The S6BW is an easy to use yet feature-rich ultrasound system, fulfilling not only traditional but emerging applications such as anesthesia, ICU and emergency.

Hybrid-ready Open MR



The PICA MR system by Time Medical serves busy radiology departments with its open,

patient-friendly design as well its technically advanced magnet, gradient and computer subsystems. The standard configuration 0.35 T PICA is designed to cover the whole body from head to toe with 8 anatomically optimized RF coils. The PICA also features hybrid configuration readiness.

Lung CT Reference Phantom

The Gammex 621 lung CT reference phantom consists of an acrylic container with four sections inside. The material in each section has a different density and different corresponding CT number. The CT number for the sections is indicative of air-trapping diseases like asthma and emphysema.

Mobile Ultrasound with 19" Monitor



BK Medical's Flex Focus scanner lets you take your practice anywhere. The Flex Focus is lightweight and small, travels to the point-of-care and can easily be docked in different configurations. The Flex Focus features a large 19" monitor, yet is small enough to fit into any clinical setting.

Multislice CT System



The system features impressive image quality for routine neuro, ortho

and body imaging using advanced reconstruction algorithms. NeuViz 16 is ideal for situations where speed and throughput are especially critical, such as trauma, and for high-volume, high-demand sites. "Dose right" design delivers optimal dose efficiency without compromising image quality.

Critical Test Results Management

Notifi® by HIT Application Solutions, LLC, is a critical test result management (CTRM) application that will satisfy the

Joint Commission's patient safety guideline for improving communication of critical results. It automates the alerting, tracking and reporting of critical results. The system requires very little human interaction and no changes to your current workflow. Notifi will alert the pre-determined care provider, escalate the communication if necessary and provide a closed-loop solution.

The information for these new products and services was provided by the manufacturers. Inclusion in this publication should not be construed as a product endorsement by RSNA.

The standard of care for digital mammography



More than a billion times per year, Barco display solutions help physicians make life-critical decisions.

That remarkable number is *not* a coincidence. Take the **Coronis 5MP Mammo** - the preferred display solution for mammography screening centers worldwide. Thanks to its state-of-the-art Per Pixel Uniformity technology, you can detect subtle details more accurately and with more confidence.

This is our way of bringing more precision and efficiency to radiology reading rooms around the globe.

Get a demo at
RSNA
Booth #8335, Hall B

Coronis 5MP Mammo

BARCO

Visibly yours

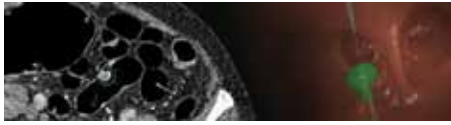
www.barcomedical.com

all about communication. collaboration. innovation.

Increasing information. Diminishing resources. Rapidly evolving technology. As the demands of patient care escalate, we confront the real issues of healthcare every day. When you partner with us, you get a healthcare IT solution from a healthcare IT company. That's why thousands of healthcare enterprises have turned to McKesson. Improve communication. Streamline your workflow. And start solving real problems. **Speak to our replacement specialists about upgrading your PACS at Booth #7713 at RSNA. www.allaboutpacs.com/rsna1**

MCKESSON
Empowering Healthcare

Virtual Colonoscopy Software



Streamlining the process for colorectal cancer screening, CADENS Colon features a true volume rendering engine targeting clinical accuracy. Combined with effective 2D/3D correlation tools, CADENS Volume Rendering leverages 2D information and provides a complete virtual environment, enhancing diagnostic confidence. CADENS Colon provides a robust and reliable identification of the colon, requiring minimal user interaction even in the most complex cases. CADENS CAD Colon also provides needed support to novice readers and offers expert readers new possibilities for customized workflow. CADENS CAD Colon integrates a unique tagging quality-tolerant electronic cleansing process, resulting in virtually adequate preparation for reviewers despite uneven patient compliance with various colorectal preparations.

delivers high quality, durable, 423 dpi resolution prints in less than 20 seconds and easily integrates into a medical cart. The printer's front-panel design offers user-friendly menus, two user preset color options and color adjustment. The device provides flashing LED notification of data transmission and print cartridge status.

MR Comfort Seat with Gas Lift



Newmatic Medical offers an ultra-cushioned MR stool designed for comfort, even for extended periods of time. The stool features a non-magnetic gas lift and sits on a stable five-point base with easy-glide swivel casters for effortless mobility. For the ultimate in

versatility, add an optional back rest and/or arms to create a chair. The stool's black vinyl upholstery is easy to clean and blends into any environment.

LAN Cable Housing System

Whether viewing X-ray images, patient demographic information or patients in your waiting room, LANscape can help you see the big picture. The newest innovation allows easy, independent focal and height adjustment of an entire bank of up to 10 flat-panel monitors—without electrical power. The spring counterbalance design provides ease of adjustment with long-term reliability. Sit or stand, and change position to remain comfortable. Create an arc of monitors around you or wall in front of you. However you work, LANscape will help you survey your own landscape.

Medical Grade Film Digitizer



VIDAR Systems Corporation introduces the American College of Radiology standard-compliant SIERRA Advantage. Because of its compact size, price point, workflow enhancing feature list and clinically proven image quality, the SIERRA Advantage can be used in a variety of healthcare settings.

New feature enhancements include an LED light source for improved reliability, a USB 2 interface for ease of integration, faster scan times—only 30 seconds for a full size film at 2 x 2.5K—and a single or 10-sheet film feeder.

Mobile Dedicated Breast MR



Ellis & Watts is demonstrating an Aurora Imaging Technology, Inc. Dedicated Breast MRI Mobile system featuring one or two dressing rooms, as well as a storage area for a biopsy cart, at floor level. This is made possible with the new design from Ellis & Watts, which features a level floor from front to rear.

Pancreatic Preoperative Planning Software



Pathfinder will offer a 3D pancreas platform, pending 510(k) approval for pancreatic preoperative planning and visualization.

Using DICOM-formatted CT or MR scans, 3D visualization of the pancreas, arteries, veins and bile ducts is realized through semi-automatic segmentation methods that reduce user processing time to minutes per case. This enhanced visualization enables determination of vessel proximity/involvement with adjacent head lesions and clarification of a "mental map" of the pancreatic environment.

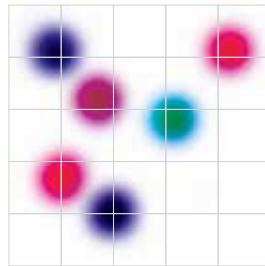
Digital Color Ultrasound Printer



Sony introduces the UP-D25MD digital color dye sublimation printer, optimized

for ultrasound applications. The UP-D25MD replaces the UP-D23MD, offering a smaller footprint and range of enhanced features. The printer utilizes the same print media as the previous model and adds an optional laminated media model providing long-lasting picture quality with high resistance to water and fingerprints. The compact, 8 3/8" wide high-speed medical device

Toward



Quantitative Imaging

Reading Room of the Future

Discover how quantitative analysis benefits the image interpretation process.

Learn about Quantitative Imaging in:

- Radiology Practice
- Image interpretation process
- Clinical applications

Clinical applications in oncology, cardiology, osteoarthritis and other disease areas will be featured from both industry and academia. Hands-on demonstrations and Meet-the-Experts sessions are scheduled throughout the week:

Sunday – Thursday, 12:15 p.m. – 1:15 p.m.

Be sure to visit the Reading Room of the Future, Lakeside Center, Level 2, Hall E

For information about programs and activities in quantitative imaging and imaging biomarker development, visit RSNA.org/Research/qiba.cfm

Portable Color Doppler Ultrasound



CHISON Q8 is a multipurpose, all digital, portable color Doppler ultrasound system featuring superior image quality across a wide range of diagnostic applications such as abdominal, obstetric/gynecological, cardiac, vascular, small parts, pediatric, neonatal and musculoskeletal. Q8 incorporates sophisticated features like real-time 4D, tissue Doppler imaging and transesophageal echocardiography scanning into one compact box. A workflow oriented user interface is built to allow user-friendly operation with minimum soft key entry. Ergonomical keyboard design, double probe connectors and USB and DICOM connectivity make your scanning fast and easy.

Thin X-ray Illuminators



Point A Technologies Inc. is the manufacturer of the new thin medical X-ray film illuminators Vista and LumiVision, which are unlike conventional viewboxes. Even though the world is converting to digital, many facilities still need to view and compare analog films to digital images and doctors do not want the large, heavy conventional 3" viewboxes to view these films. Point A units are only 1 1/2" thin and lightweight, and have external electrode fluorescent lamps inside that are capable of brighter, longer lamp life and over 90 percent uniformity across the viewing area.

Analog and Analog-to-Digital X-Ray



Shimadzu Medical Systems USA introduces the MobileArt Evolution [12kW] and the convertible-to-digital DR MobileArt Evolution [32kW] analog X-ray systems. The DR MobileArt Evolution has 32 kilowatt maximum power out-

put for superior image quality and ensures blur-free images and short exposure times. This model can be converted from analog to digital X-ray functionality. The standard MobileArt Evolution delivers reliable, basic functionality and delivers superb performance with its 12.5 kW of power.

"Telemaintenance" for Medical Equipment



The Teleconsole by Concepters is a unified remote diagnostic access (RDA) product aimed to make biomed telemaintenance a reality. It is equipped with extensive RDA capabilities, enabling technicians to securely and remotely perform maintenance on medical equipment. Ranging from software upgrades to calibrations on medical devices, and over-the-shoulder collaborations with remote subject matter experts to real-time troubleshooting and repair, technicians have full reach-back to medical equipment from anywhere in the world. This technology was developed through Department of Defense funded research and development initiatives and was engineered to deliver full telemaintenance capability for mobile hospitals in theater.

Web-based Physician and Patient Image Portal



AccelaRAD introduces *SeeMyRadiology.com*, a software-as-a-service solution (SaaS) that eliminates the problems current LAN-based PACS and CD/DVD duplication cause when entities attempt to share access and exchange diagnostic images. Leveraging the AccelaRAD VRN platform used by thousands of radiologists for imaging workflow, *SeeMyRadiology.com* is a true multi-tenant SaaS with portals for hospitals, radiologists, clinicians and patients. Its innovative cloud computing architecture allows authorized users to simply upload and access appropriate files safely and securely, independent of location and native imaging application, to manage and share data virtually, with no burden on the hospital or practice IT staff.

Vendor-Neutral PACS



aycan store is a cost-effective, high performance and flexible DICOM archiving and distribution system that can be tailored and customized to fit into your current and future workflow. Its vendor neutrality allows for a seamless integration into a multivendor environment. Storage and performance can be added as your business grows. Built on more than 10 years of extensive experience in long-term archiving of medical image data, aycan store is available at a fraction of the cost of well-known PACS brands. With aycan's "immediate live customer service and support," you are always up and running.

Small-Footprint Digital Imaging System



ALLPRO Imaging introduces the ScanX Fit™ digital imaging system, which produces detail-rich, high-resolution digital body images in all standard sizes up to 14" wide by any practical length. The ScanX Fit is easy to learn and operate and setup is quick and simple. This system features an extremely small footprint and can be wall-mounted for even greater space savings. ScanX Fit is the perfect solution for a simple, affordable upgrade to digital.

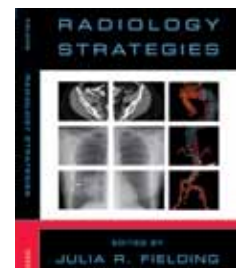
Patient Comfort Foam



With the introduction of Precision Cell Foam™ and PolyDry Healthcare Fabric™, Creative Foam Medical Systems remains on the cutting edge of foaming technology. Precision Cell Foam can be molded with great part definition and detail, creating an excellent cushioning medium for outstanding patient comfort. Its cellular design provides a surface finish that allows parts to

be repetitively cleaned and disinfected. The flexible membrane of PolyDry Health Fabric allows the material to be formed in complex shapes and designs. With its fluid-proof surface and antibacterial characteristics, this material is a great candidate for coil encapsulation and other patient contact surfaces.

Radiology Strategies for the Non-Radiologist




Radiology Strategies, edited by Julia Fielding and published by Oxford University Press, is designed to help the medical student and non-radiology practitioner learn to make effective use of radiologic tests based on a patient's signs and symptoms. Commonly encountered disease processes are covered in clinical vignettes that systematically discuss case history, background, test rationale, test of choice, radiologic images demonstrating diagnostic findings and evidence-based references. Introductory chapters cover radiation safety, contrast agents, how a radiologic test can be chosen effectively based on specificity, accuracy and pre-test likelihood of disease as well as general guidelines on when and why to choose a particular imaging modality. Quick reference features such as decision algorithms, an index of common signs and symptoms and a convenient two-page spread make this an indispensable study aid as well as a quick reference handbook in the clinic and on the ward.

Diagnostic Display Monitors



Eizo unveils its improved line of clinical review monitors, the RadiForce MX-Series. This series consists of seven models in different sizes from 17" to 30" and offers a cost-efficient alternative to full-fledged diagnostic monitors for hospital information systems with features like a DICOM-simulated mode for reviewing medical images with patient charting applications. The RadiForce MX-Series offers compliance with stringent medical, safety and EMC emissions standards. The newest models come with DisplayPort connectivity supporting 10-bit color input that displays up to 1.07 billion colors.




eTRAX is brought to you by CIVCO, a trusted leader in image guidance and infection control.

WWW.CIVCO.COM

The biggest breakthrough in ultrasound accuracy is in Booth 8709.

Introducing eTRAX™, the revolutionary needle guidance system that takes real-time image-guided navigation to a new dimension.



Guidance like never before.
www.CIVCO-eTRAX.com

COPYRIGHT © 2009, CIVCO IS A REGISTERED TRADEMARK OF CIVCO MEDICAL SOLUTIONS. eTRAX IS A TRADEMARK OF CIVCO. ALL OTHER TRADEMARKS ARE THE PROPERTY OF THEIR RESPECTIVE OWNERS. US PATENTS PENDING. ALL PRODUCTS MAY NOT BE LICENSED IN ACCORDANCE WITH CANADIAN LAW. PRINTED IN USA. 2009A-2844

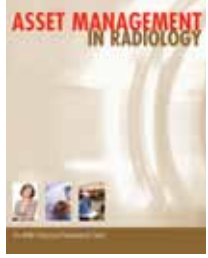


AZE, LTD.

BOOTH #5459, HALL A

ADVANCED VISUALIZATION

Radiology Asset Management Textbook



AHRA's *Asset Management in Radiology* is a comprehensive textbook offering information on the latest, most effective best practices in asset management. It addresses a wide variety of issues including capital equipment planning, building and construction planning, project implementation, maintenance and supplies. Assets in the healthcare environment represent a significant expense to any organization. Managing these assets and their associated expenses requires expertise, know-how and an acquired wisdom. This book is designed to provide the imaging administrator with the foundational knowledge to manage these assets on a day-to-day and annual basis.

Whole Blood Creatinine and eGFR in 30 Seconds



Nova Biomedical's StatSensor® Creatinine with estimated glomerular filtration rate (eGFR) provides a simple 30-second assessment of renal function by finger prick capillary blood sampling. This lightweight, handheld analyzer can minimize the risk of contrast media-induced nephropathy and eliminate workflow interruptions. StatSensor Creatinine offers easy, virtually painless capillary blood sampling on small, 1.2 microliter blood samples with 30-second test results and interfaces seamlessly with hospital and laboratory information systems. Testing can be performed by radiology technicians or other non-laboratory personnel. StatSensor Creatinine calculates eGFR by either Modification of Diet in Renal Disease (MDRD) or Cockcroft-Gault equations.

Cloud Server Data Storage



Accessential's Virtual Desktop Solution (VDS), a new and innovative IT on demand cloud server virtualization process, replaces the conventional server-desktop setup with a state-of-the-art virtual environment. VDS devices have no CPU, memory, operating system, software or moving parts. Instead, everything is housed in a highly secure offsite datacenter, freeing up valuable office space. Data are always secure, information leakage and theft are virtually eliminated and data are immune from viruses and malware. VDS works seamlessly with RIS/PACS systems without any delay. Accessential will do all updating, troubleshooting, monitoring, backing up, storing and upgrading.

Treadmill Workstation



With WOODWAY's DeskMill you can now combine work and exercise into one calorie-burning, stress-relieving activity.

WOODWAY's patented design provides users with the most comfortable walking surface—even in dress shoes—right at their desk. Simply raise the desk to the optimum height, select your desired speed on your computer or PDA and start burning calories.

Breast MR Skin Markers



Beekley Corporation introduces Brava™, a new family of skin markers for exact localization in breast MR. Professional, sanitary and more precise than taping vitamin capsules to such a sensitive area as the breast, Brava skin markers are indentation-free and provide a bright, consistent image on every sequence. Designed specifically for breast MR imaging, Brava's

self-adhesive label features a feminine, patient-friendly design that can help alleviate patient anxiety. Brava is available in a variety of styles and sizes. Whether your marker needs to image on two or nine slices, there is a Brava skin marker for your needs.

General Radiology and OB-GYN Structured Reporting

AS Software's AS-Ultrasound provides a fast and easy way to produce detailed structured ultrasound reports for abdominal, aorta, breast, adult and pediatric renal, neonatal head, female and male pelvis, scrotum, thyroid and other ultrasounds. Automatically transfer measurements and reduce or eliminate dictation to provide finalized reports quickly to referring physicians.

Four-channel Spectrometer Receiver Board



MR Solutions Ltd. introduces the new four-channel MR3500 receiver board with the ultimate in performance,

enabling the MR6000 spectrometer to produce even more outstanding image quality at low or high fields.

TECHNICAL EXHIBITION HOURS

Hall A (South Building), Hall B (North Building), Hall D (Lakeside Center)
 Sunday–Wednesday 10:00 a.m.–5:00 p.m.
 Thursday 10:00 a.m.–2:00 p.m.

Middle East HEALTH

A WORLD OF OPPORTUNITY

Getting into the fast growing Middle East market is not easy, but once in, business is good. *Middle East Health* will open the door for you.



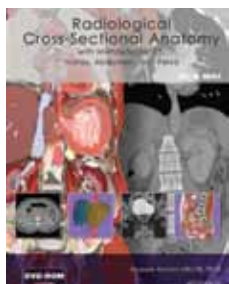
Middle East Health is the region's leading English language medical trade magazine and has been serving the Middle East for more than 30 years. It is distributed in these countries:
 Bahrain, Egypt, Iran, Iraq, Jordan, Kuwait, Lebanon, Oman, Qatar, Saudi Arabia, Syria, UAE, Yemen.



The Americas Contact: Jay Franco
 jfranco@MiddleEastHealthMag.com | Tel: 1-416-439-5100

www.MiddleEastHealthMag.com

Multidetector CT Cross-Sectional Anatomy Reference



Radiological Cross-Sectional Anatomy with Multidetector CT: Thorax, Abdomen and Pelvis by Primal Pictures is a resource for anyone using cross-sectional anatomy or involved in the interpretation

of radiological scans. Thousands of clear and accurate images in an intuitive digital format provide you with an invaluable aid to cross sectional anatomy, CT and MR interpretation and a stunning 3D anatomy library. Interactive functions allow you to add/remove layers, rotate and label structures with the click of a mouse. In the cross-sectional anatomy section, label any structure on either the cross section or the scans and scroll through all the available slices.

Voice Recognition for Diagnostic Reporting

ScImage's anywhere-diagnostic reporting suite, PicomEnterprise, now includes voice recognition for multiple specialties while delivering unparalleled physician-specific configurability for multiple disciplines. A complete and highly configurable radiology reporting module based on Dragon speech engine is natively available from the physician worklist. The speech and reporting tools are equally suited for physicians who wish to dictate within PicomEnterprise for external transcription and proceed with batch signing. In addition to the needs of

radiology, echocardiography and vascular ultrasound, the improved reporting suite addresses nuclear cardiology, Holter monitoring and cardiac catheterization.

Stocking Parts Partnership Program

DOTmed launches its Certified Parts Vendor (CPV) program, comprising top-tier stocking parts vendors who are committed to the parts business and building long-term relationships. Biomedical engineers can buy parts directly from these vendors at DOTmed.com. Vendors have posted a written warranty, return policy and acceptance policy on DOTmed, have signed DOTmed's Code of Ethics and have their DOTmed Star Rating displayed. Parts buyers also get "Rewards-for-Ratings" Points each time they buy a part and rate a seller.

Web-based Decision Support



Nuance Healthcare introduces RadPort™ 2.0, the its latest in secure, Web-based decision support, which allows providers

to manage high-tech imaging utilization and satisfy pre-certification requirements through clinical appropriateness criteria. Nuance Healthcare actively participates in the Image e-Ordering Coalition, which promotes Health Information Technology-enabled decision-support (e-Ordering) as a solution that ensures all patients receive the most medically appropriate diagnostic imaging test for their specific condition.

Communication-based PACS



With improved volume visualization functionality, Sectra PACS focuses on communication and makes exploratory visualization available for general use. Fully inte-

grated into the PACS workstation and designed to increase review efficiency and result communication, this powerful functionality provides physicians with value-added imaging data at the point of care and improves physician workflow. It supports the radiologist in communicating with referring physicians by providing excellent tools to explain and present important details and findings in a quick and easy way.

Nonferrous LED Lighting for MR Imaging



The Med-Vizion ZXR LED down light by ETS-Lindgren is the latest in lighting technology specially designed for MR imaging suite applications. This high per-

formance, vertical light-emitting diode down light has no ultraviolet, infrared or radiofrequency emissions and features engineered heat displacement preventing premature LED failure. Without filaments, the LEDs are unaffected by magnetic fields. This low-cost, maintenance-free lighting solution operates at 120/240 VAC, and can be used in any field strength MR imaging room, providing up to 100,000 hours of low-energy operation. The noise-free operation and nonferrous construction deliver optimal illumination at task and floor levels.

Mammography LCD Monitor



Eizo's RadiForce GS521 is a 5 mega pixel monochrome LCD monitor. With 2,048 x 2,560 resolution, this monitor is more than suitable for accurately rendering

subtle masses and calcifications within a mammography image. New on this model is EIZO's patent pending frame rate control technology: 4,096 (12-bit) grayscale tones can be displayed simultaneously from an abundant palette of 13,771 tones for high-definition digital mammography. DisplayPort connection enables larger volumes of information to be transmitted at once, making the GS521 more easily adaptable to

high-resolution or multi-grayscale display. It also comes with a subpixel drive function capable of displaying 15 mega pixels by controlling each subpixel separately.

MR Motion Tracking



The MRRA Motiontracker model HT-1000 provides high-bandwidth measurement of head motion during an MR scan. The instrument uses state-of-the-art optical and digital signal processing techniques to measure patient motion from outside the scanner and provides data on all six degrees of movement. The instrument features nonferrous, MR-safe construction and is hardened against strong magnetic and radiofrequency fields. This stand-off unit produces no interference to the scanner to ensure MR data integrity. Movement data are recorded as a standard text file and data extraction may be done in any suitable program including Microsoft Excel or Matlab.

Teleradiology Service

USArad provides a single teleradiology resource to imaging centers, radiology practices and hospitals nationwide. USArad provides final, preliminary, day or night interpretations and vacation and sick leave coverage, including overflow and second opinion service. All USArad radiologists live in the U.S., are board certified by the American Board of Radiology, are fellowship trained and are licensed in 43 states. By providing the highest quality reports, real-time turnaround and collaborative services to imaging centers, physician practices, radiology groups and hospitals, USArad helps increase referrals and revenues, improve clinician satisfaction, optimize staffing costs and, most importantly, improve the level of patient care.

Digital Mammography System



Brestige by Medi-Future is full-field digital mammography with direct conversion of the flat-panel detector. It optimizes the radiologist's review workstation for stereotactic breast biopsy.

SUPERSONIC
imagine
The Theragnostic Company™

North Building
Hall B
Stand 7343

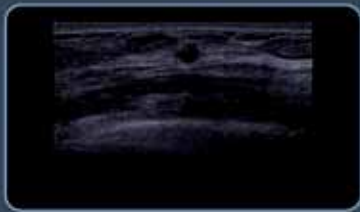
AIXPLORER

MultiWave™

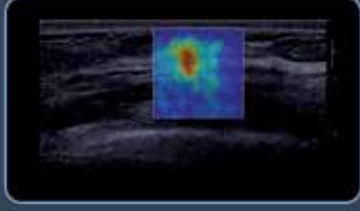
Multiply your confidence
with MultiWave™ Ultrasound Technology

Two waves to better characterize lesions


One ultrasound wave to ensure impeccable B-mode image quality



One ShearWave™ to display true local tissue elasticity



Hard



Soft

ShearWave™ Elastography Scale

www.supersonicimagine.com

FDA clearance

Authoritative. Timely. Thieme.



Visit us in **Booths #503, #8704 & #2806** to see these new titles
plus bestsellers, journals, and more in our world-renowned Radiology program.

www.thieme.com



GLOBAL REACH.



Workstation. Location. Solution. CARESTREAM RIS+PACS.

Introducing the new CARESTREAM RIS/PACS that allows healthcare professionals to collaborate seamlessly across multiple sites, platforms and clinical specialties to provide timely, quality patient care at reduced costs. All personnel involved – schedulers, technologists, radiologists, referring physicians – can contribute to the efficient delivery of patient care. From order initiation through distribution of results, ONE desktop optimizes productivity for the entire radiology workflow. IT'S TIME YOU PUT IT TO WORK.

ONE Solution.

RSNA09|BOOTH211
LAKESIDE CENTER | HALL D

Integrated solutions for every step of diagnostic imaging
CR+DR+RIS+PACS+ARCHIVE+PRINT+

www.carestreamhealth.com/superPACS
1-877-865-6325, ext. 655

Carestream 
HEALTH

Just eMix™ it!

Move medical images and information with the speed and simplicity of email.

Exclusive RSNA Premiere:



Electronic Medical Information Exchange
Fast ▪ *Secure* ▪ *Interoperable*

Any PACS ▪ Any Facility ▪ Any Physician ▪ Any Patient



Sign-up for a complimentary eMix trial
VISIT US AT DR SYSTEMS BOOTH 6229
South Building, Hall A

www.eMix.com